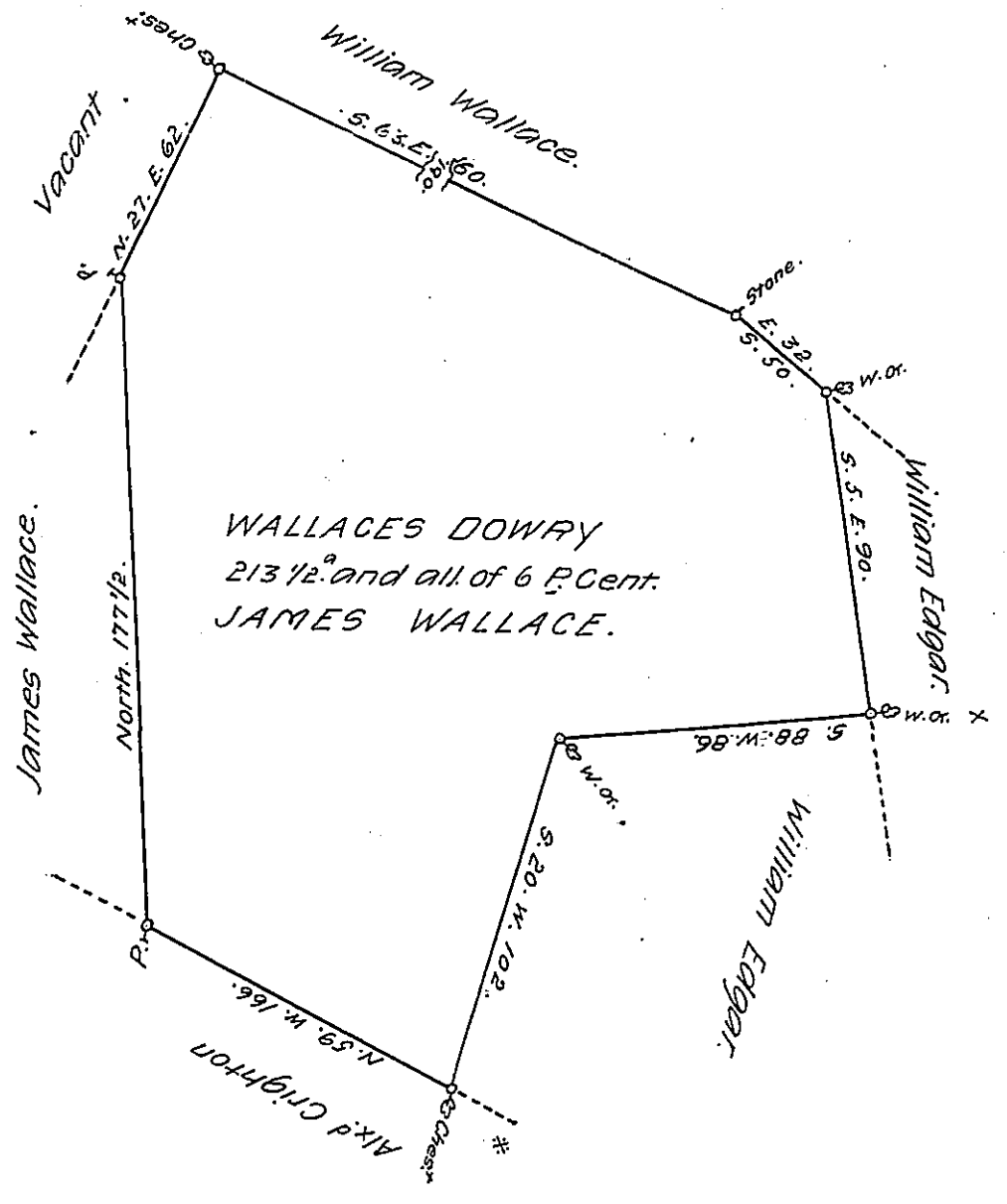


FORM NO. 1.



Say N. 59. W. 96. P^s

A Draught of a Tract of Land Situate in Shrewsbury Township York County
 Surveyed the 4th of the 11th month 1767 for James Wallace in Pursuance of
 two Warrants Granted to Alex^d Wallace one for 160^a dated May 19th 1752
 the other for 50^a dated March the 9 1753. Improved about 18 years.

P. W. Matthews D.Y.S.

To Jn^s Lukens Esq^r
 Surv^r Genl.

IN TESTIMONY that the above is a copy of the original remaining on file in
 the Department of Internal Affairs of Pennsylvania, made
 conformably to an Act of Assembly approved the 16th day of
 February 1833, I have hereunto set my hand and caused
 the Seal of said Department to be affixed at Harrisburg,
 this thirteenth day of June 1907.

Henry Houch
 Secretary of Internal Affairs.